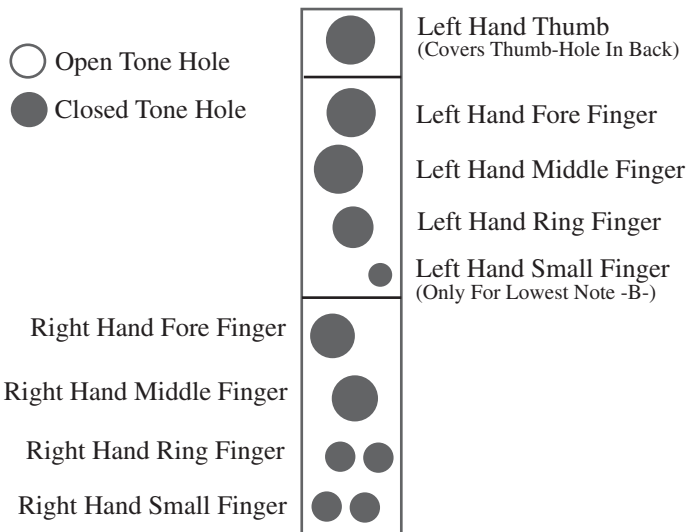
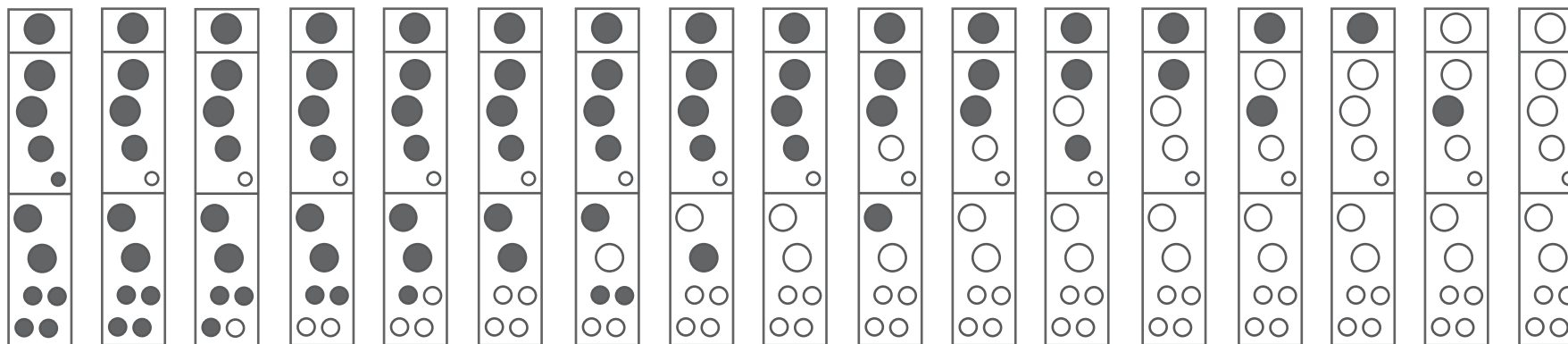
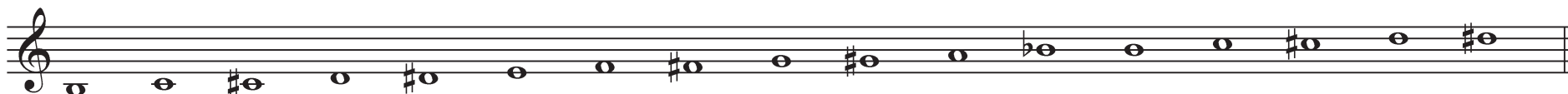


Fingering Chart for Susato Gemshorn in -c'- with lowest note -b'-



A **Tuning-Band** allows moderate pitch adjustment when lowered downwards, partially reducing the opening of the labium window.



Soprano Gemshorns in -c'-, made of ABS

Range from -b'- to -d#''', approx. 7" long.
Baroque fingering, double holes for -c-c#- and -d-d#-
Available in seven colors:
Order #: GEMS-C-B, black color
Order #: GEMS-C-I, ivory color
Order #: GEMS-C-R, rosewood color
Order #: GEMS-C-M, marine blue color
Order #: GEMS-C-U, ultra blue color
Order #: GEMS-C-P, purple color
Order #: GEMS-C-C, cherry-red color

Instructions and Tune Books

Begin with Three, by Daniel Chazanoff
Instruction book for Gemshorns in -C-
Order #: MSFO5-C \$6.95

Tune Book Two, compiled by George Kelischek
104 one-octave tunes! All playable on sopr. gemshorns.
Good companion book for -c- gemshorns and ocarinas
Order #: MR151 \$6.95